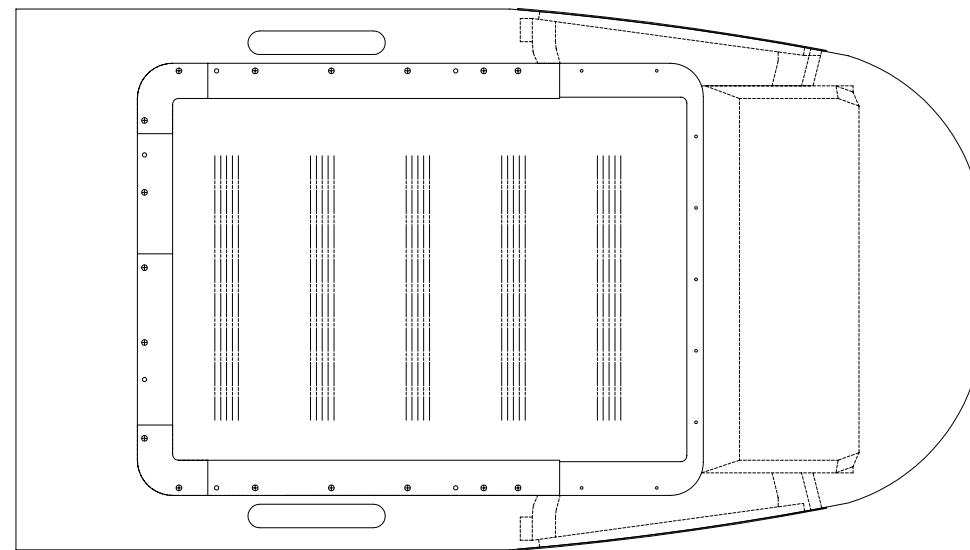


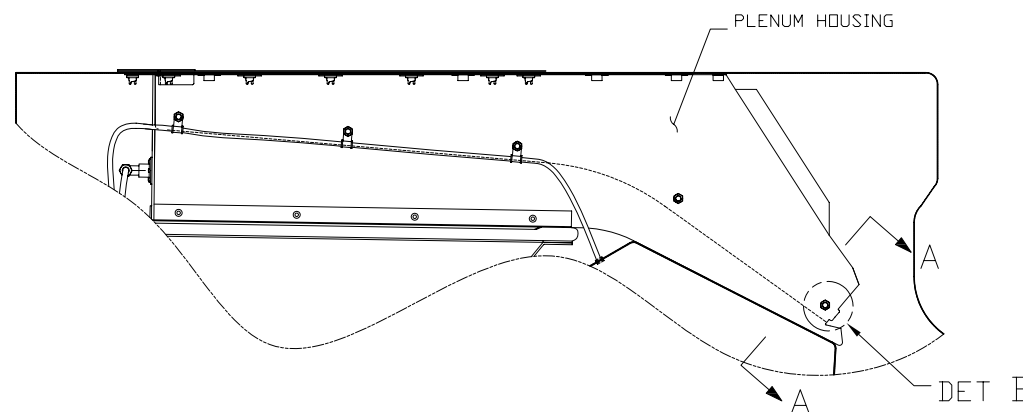
NOTES UNLESS OTHERWISE SPECIFIED

- 1 DRAWING PER ASME Y14.5M-1994
- 2 REMOVE ALL BURRS AND SHARP EDGES
- 3 HYSOL EA934NA, EPOXY PASTE ADHESIVE MANUFACTURED BY HENKEL CORPORATION AEROSPACE GROUP BAY POINT, CA OR DP420 SCOTCH WELD EPOXY ADHESIVE MANUFACTURED BY 3M ST. PAUL, MN
- 4 PR-1440-B2 SEALANT MANUFACTURED BY PRC-DESOTO INTERNATIONAL, INC MEETING MIL-S-8802 CLASS B OR AMS-S-8802, OR RTV103 OR RTV108 MANUFACTURED BY GE SILICONES MEETING MIL-A-46106, OR 832 ADHESIVE SEALANT MANUFACTURED BY DOW CORNING
- 5 ALTERNATE PN NAS1921B04S05 INCLUDE WITH KIT
- 6 PREPARE ALL SURFACES TO BE BONDED USING THE FOLLOWING STEPS:
  1. WASH SURFACE WITH ACETONE
  2. SCUFF SURFACE WITH 200 GRIT ALUMINUM OXIDE SAND PAPER
  3. VACUUM OR USE COMPRESSED AIR TO REMOVE SANDING RESIDUE FROM SURFACE

REVISIONS			
REV	DESCRIPTION	DATE	APPROVED
-	INITIAL RELEASE	07/29/05	JW

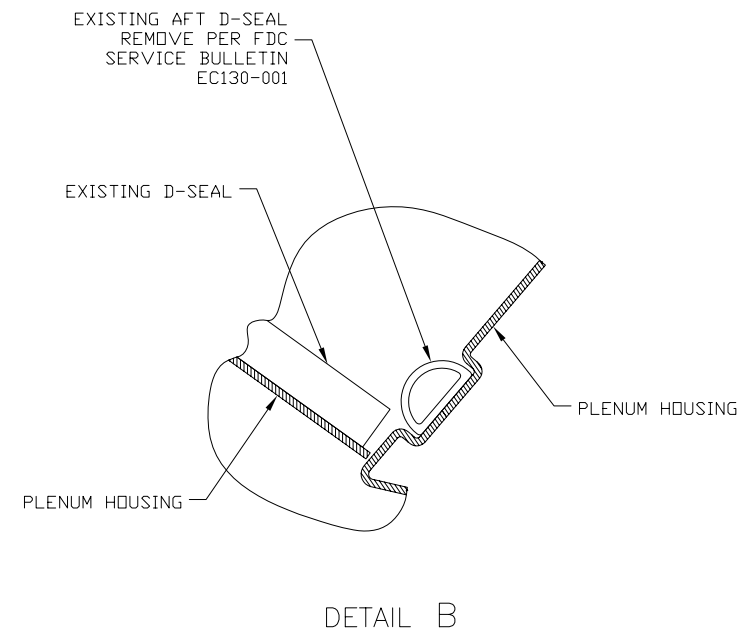


ENGINE COWL



FWD

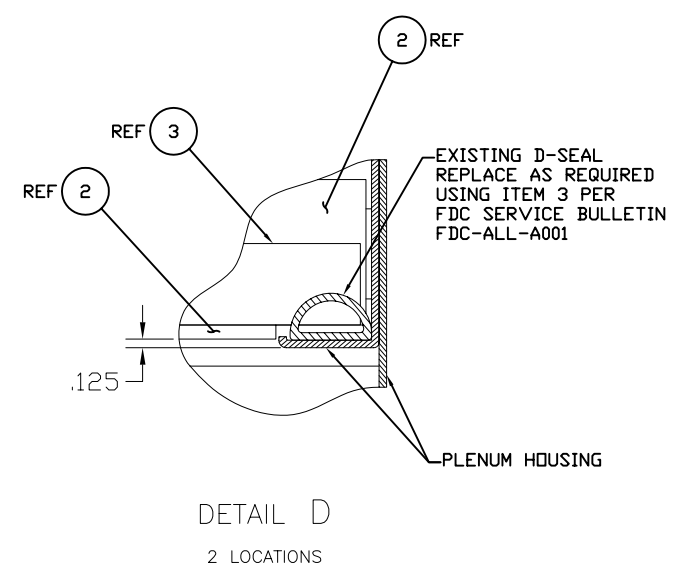
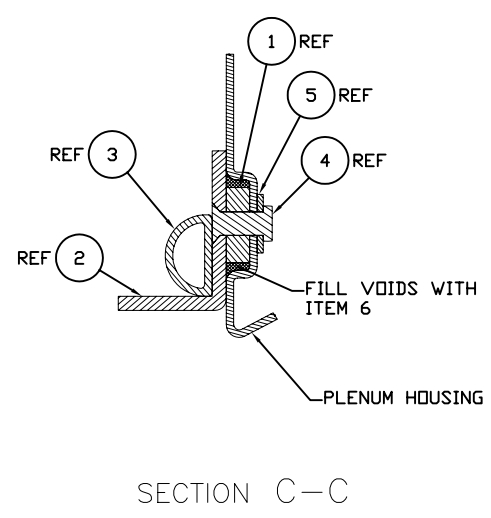
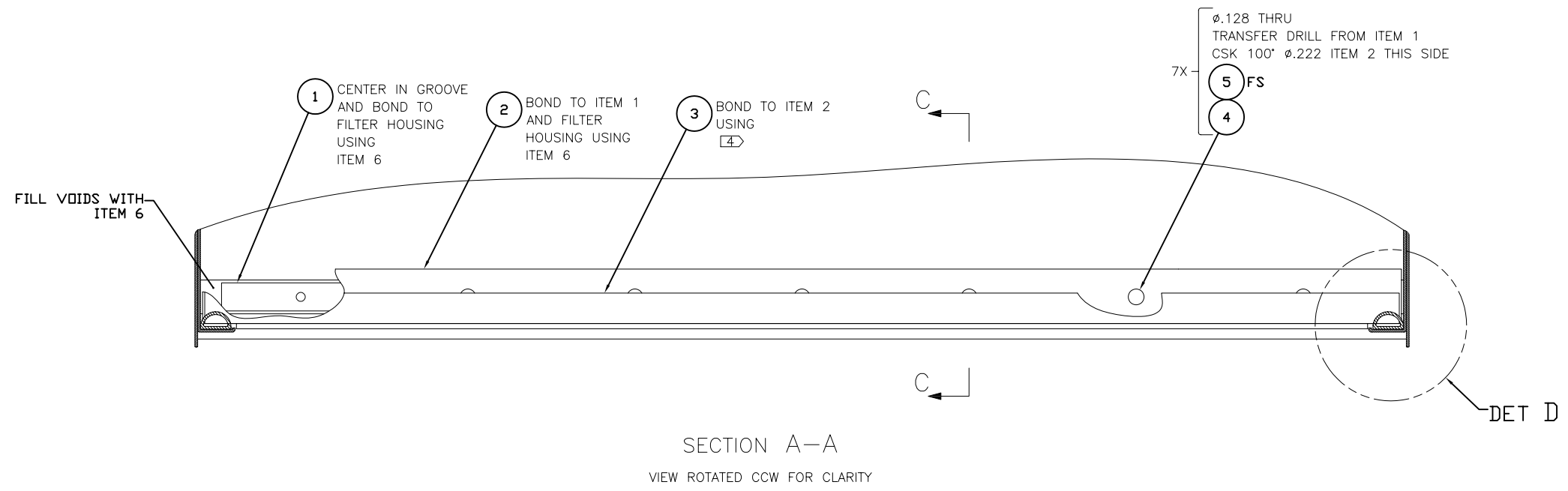
EC130 ENGINE COWL  
WITH INTEC INLET BARRIER FILTER  
INSTALLED PER STC SR01373SE



ITEM NO.	QUANTITY REQD PER DASH NO.	PART NO.	MATERIAL	DESCRIPTION
6		2	EA934NA 50 GRAM	EZ PAK
5		7	NAS1149DN432K	DRILL ID TO #.128 AS REQUIRED
4		7	MS20426A4-7	WASHER, FLAT
3		1	1350A15-101	RIVET #.125, COUNTERSUNK
2		1	1130KP2	D-SEAL
1		1	1130KP1	100 INCHES, CUT AS REQUIRED
		-1		SUPPORT, REAR SEAL, REPAIR
		-1		SHIM, REAR SEAL, REPAIR

PROPRIETARY NOTICE		UNLESS OTHERWISE SPECIFIED		APPROVALS		PARTS LIST	
INTEC PROPRIETARY RIGHTS ARE INCLUDED IN THE INFORMATION DISCLOSED HEREIN. NEITHER THIS DOCUMENT NOR THE INFORMATION DISCLOSED HEREIN SHALL BE REPRODUCED, USED, OR DISCLOSED IN ANY MANNER WITHOUT THE WRITTEN PERMISSION OF INTEC. THE FOREGOING RULES DO NOT APPLY TO VENDOR DATA.		DIMENSIONS ARE IN INCHES DIMENSIONAL TOLERANCES 3 PLACE DECIMAL ± .001 2 PLACE DECIMAL ± .005 1 PLACE DECIMAL ± .1 ANGULAR ± .2°		BY	DATE	INTEC HELICOPTERS BELLEVUE, WASHINGTON	
1 ALL EC130 KITS REQUIRING FDC SERVICE BULLETIN EC130-102		NEXT HIGHER ASSEMBLY		CHN	7/15/05	TITLE KIT, REAR SEAL REPAIR	
APPLICATION				APPROVED	J. WOLDA	07/29/05	SIZE D
				INITIAL JOB NUMBER		ING NO.	1130KT1
						REV	-
						SHEET	1 OF 2

REVISIONS			
SH	REV	DATE	APPROVED
-	-	07/29/05	JW



INTEC HELICOPTERS BELLEVUE, WASHINGTON			
TITLE KIT, REAR SEAL REPAIR			
SIZE D	FSC# NO.	ING# NO. 1130KT1	REV -
SCALE NONE	SHEET 2 OF 2		